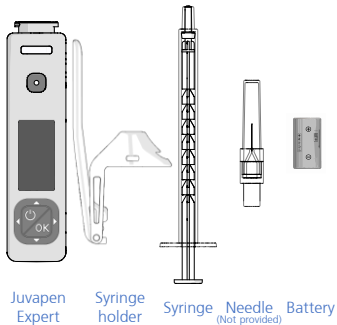


JUVAPEN
Expert

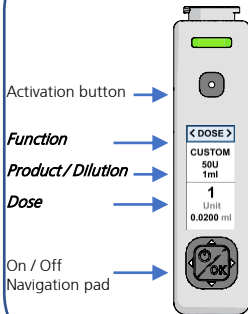
QUICK START GUIDE

Box content



i Please refer to A2 for battery replacement at the end of the QSG

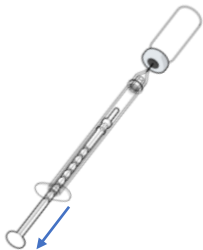
User Interface



Navigation pad



Fill syringe



1

Remove bubbles



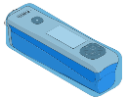
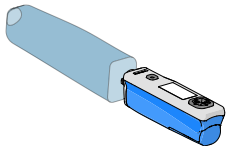
2

Break the rod
(breakable at 0.1ml
increments)



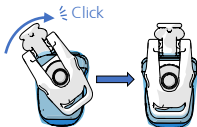
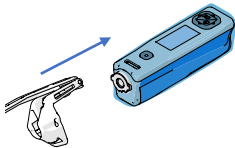
3

Insert sleeve



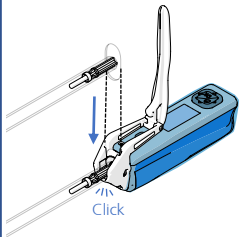
4

Attach the syringe holder



5

Slide syringe



6

Turn on



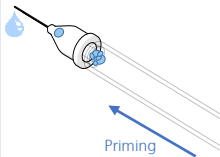
7

Prime...



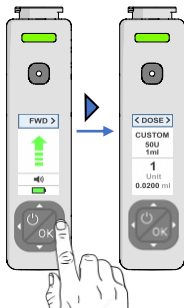
8

...until **all** air bubbles are removed



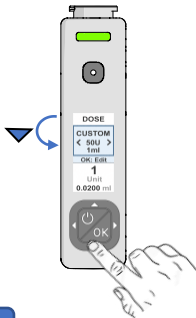
9

Select DOSE *Function*



10

Select *Product*



11

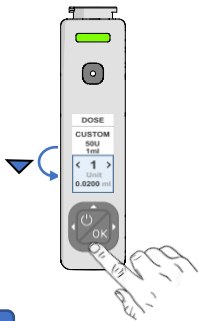
Choose the *Product*

i Please refer to A1 at the end of the QSG for Product possibilities



12

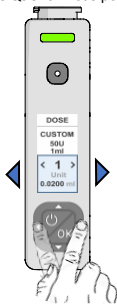
Select *Dose*



13

Choose *Dose*

i Please refer to A1 at the end of the QSG for Dose possibilities



14

Inject

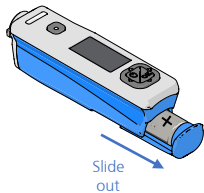


15

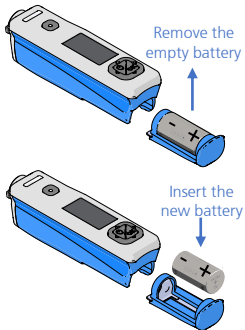
Product and Dose

Product	Dilution	Dose in unit	Dose in volume (ml)
BTX1	50U in 1ml	0.5 – 1 – 2 – 3 – 4 – 5	0.01 – 0.02 – 0.04 – 0.06 – 0.08 – 0.1
BTX2	50U in 1.25ml	0.5 – 1 – 2 – 3 – 4 – 5	0.0125 – 0.025 – 0.05 – 0.075 – 0.1 – 0.125
AZZAL1	125U in 0.63ml	1.25 – 2.5 – 5 – 10 – 20	0.0063 – 0.0126 – 0.0252 – 0.0504 – 0.1008
AZZAL2	125U in 1ml	1.25 – 2.5 – 5 – 10 – 20	0.01 – 0.02 – 0.04 – 0.08 – 0.16
CUSTOM	10U to 500U in 0.3ml to 5ml	0.25 to 20	0.005 to 0.2
VOLUME	-	-	0.005 to 0.2

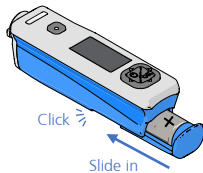
A) Remove battery holder



B) Change battery



C) Insert battery holder



ROBOTIC SYRINGES

J U V A +



JUVAPLUS SA
Rue du Pré 10
CH-2114 Fleurier
SWITZERLAND